



# JANUARY NEWSLETTER



DINERS CLUB  
VOLUNTEER SPOTLIGHT  
VISION & HEARING CENTER  
UPDATES



# NEWSLETTER

## CONTENTS

- 3 **Meet the Team**
- 4 **Letter from Jovita**
- 5 **Donor Thanks**
- 6 **Your Generosity at Work**
- 7 **Tech Clinic**
- 8 **Diner's Club**
- 9 **V & H Center Updates**
- 10 **Activities Calendar**
- 11 **December Menu**
- 12 **Jam Session**
- 13 **Sponsors**
- 14 **Spiritual Corner**
- 15 **Subaru Share the Love**
- 16 **Programs + Services**
- 17 **Volunteer Opportunities**
- 18 **Fitness Membership**
- 19 **Happy Birthday!**

# MEET THE TEAM



Jovita Piña  
Executive Director



Jeny Ambriz  
Membership &  
Information Coordinator



Daisy Arenas  
Development & Communications  
Coordinator



Sky Barker  
Nutrition Director & Chef



Anne Bulchis  
Development and  
Communications Director



Veronica Cisneros  
Transportation  
Coordinator



Eliseo Gonzalez  
Facilities Manager



Janis Gillette  
Caregiving Manager



Molly Green  
Program & Activities  
Coordinator



Dawn Hunt  
Caregiver



Brooke Irby  
Office Manager



Luis Joya  
Dishwasher



Silvia Martinez  
Caregiver



Cyndi Ochoa  
Operations Director



Kristen O'Laughlin  
Caregiving Coordinator



Janileth Ruiz  
Vision & Hearing  
Technician



Brenda Stanton  
Caregiver



Maria Vazquez  
Sous Chef

To connect with a member of our team, please email us at [info@seniorconnectionidaho.org](mailto:info@seniorconnectionidaho.org) or call us at 208-788-3468.

To connect with a member of our team, please email us at [info@seniorconnectionidaho.org](mailto:info@seniorconnectionidaho.org) or call us at 208-788-3468.



## Letter From Jovita

### Happy New Year!

As we welcome 2025, I'm deeply grateful for the generosity and support we received last year. Thanks to you, we can continue providing essential programs and services to Blaine County seniors. Your contributions make a lasting impact—thank you!

A new year is a fresh start, and there are many ways to get involved at the Senior Connection:

### Health & Wellness

For \$80/year, our fitness memberships include all classes and unlimited gym access (except during class times). Join classes like Fit & Fall Proof, Casey's Circuit, and Ageless Motion with Manon. Check the Activities calendar for details.

### Transportation

Need a ride? We offer transportation to the Center for fitness classes, lunch, and medical appointments. See page 17 or call us for rates and details.

### Caregiving

We're dedicated to helping older adults age with dignity. Our caregiving services assist with daily living, and we host an Alzheimer's Support Group every Wednesday.

### Nutrition

Join us for a nutritious lunch Monday–Friday, 11:30 AM–1:00 PM, or enjoy a meal delivered through Meals on Wheels. Call 208-788-3468 to learn more.

### Volunteerism

Volunteers are the heart of what we do! We're seeking lunchtime servers and Meals on Wheels drivers. If you'd like to help, call us at 208-788-3468.

### Vision and Hearing Updates

We have some exciting updates! Vision and hearing services are moving to Hailey—find all the details on page 9.

Thank you for making the Senior Connection a special place. I look forward to all we'll accomplish together in 2025.

Wishing you a happy and healthy New Year!

With gratitude,



Jovita Piña  
Executive Director



# Thank You

Our sincere thanks to the following individuals and groups who gave to the Senior Connection between November 19 - December 16

Anonymous  
Mary and Jon Adams  
Samuel H. and Mary Jane Armacost  
Phyllis and Michael Viola  
Marsha Azorsky  
Baird Foundation  
Jim Baird  
Alexandra Babalis  
Elli and Jerry Bernacchi  
Jim Blandford  
Joel Bostrom  
Anne Bulchis  
Dawn Cieslik  
Mary and Mike Colhoun  
~in memory of Dick Springs  
~in memory of Elaine Rossof  
Glenda Cox  
Don and Heather Cunningham  
Beverly De Moura  
Hope Hayward and Walter Eisank  
Candace and Rick Emsiek  
Mike Fehrenbacher  
Pamela Feld  
Renoir and Joseph Finizio  
Mary Floyd  
Roger & Jeanne Foreman  
Joyce Fogg  
Sue Bridgman and Jim Downen  
Sherry Daech  
Matthew Gelso  
James Keller and  
Susan Giannettino  
Deana and Morley Golden  
Lee Golden  
Fran and Jed Gray  
Jeanne and Jacob Greenberg  
Hallmark Idaho Properties  
Bob and Debra Hall

Michael and Irene Healy  
Roberta and Tom Heinrich  
Shirley and Thomas Held  
Sandra and Rick Hesselbacher  
Tyler and Amery Hendricks  
Margaret Hicks  
Mary Huck  
Martha Jennings  
Cleve and Andie Johnson  
Debbie and Jerry Johnson  
Laura and Craig Johnson  
Robert and Nancy Jones  
Christine Keirn  
~in memory of Don Keirn  
Nancy and Samuel Kennette  
Sharon and Michael Landau  
Ali and Jerry Lane  
LeeAnne and Chris Linderman  
The Life Church,  
Pastor Mike and  
Carola Hendricks  
Murray McClain  
Mindy Meads  
Mindy Meads  
Peggy Miller  
Katherine Miner  
Thomas Monge  
Laurie & James Moss  
Serena Altshul  
Nick Aldridge  
PayPal  
Carol and Todd Pintler  
Jolean and Allen Quimby  
Kathryn Reynolds  
Ronile and Leroy Robinson  
Abigail Sahn  
Lou Scharpf  
Rhea Schwartz

Bretall Family Fund  
Sally Gillespie, Spur  
Community Foundation  
Blaine Stavn  
Sharon Steiner  
~in honor of Sue Peterson  
Thomas and Kathryn  
Stevens  
Carol Stephens  
Bob and Betty Stone  
Jan Swanstrom  
Erica and Eric Thorson  
Frank and Rosalie Tornello  
Charlotte Unger  
Diana and Karl Wadsack  
Kathleen and Jim Walker  
Penny Weiss  
Geoff Wells  
Gail Wenger  
Jacqueline Wieman  
Lawrence Young



**LOOK AT  
WHAT  
YOU MADE  
POSSIBLE!**



**25,000 MEALS**



**250 FITNESS CLASSES**



**3,000 RIDES**



**6,000 HOURS OF  
CAREGIVING**

**THANK YOU  
FOR AN  
AMAZING  
2024!**

# Dr. Carol Stephens, PsyD, LP, CBSM

Wednesdays At Senior Connection  
2 PM - 3:30 PM

Thursdays (every other) at Wood River YMCA  
2:30 PM - 3:45 PM

THE SENIOR CONNECTION



Dr. Carol Stephens leads and facilitates this group for family caregivers of those living with Alzheimer's and other related dementias.

## THEMES FOR CONVERSATION



Understanding Alzheimer's /Dementia



Communication Strategies



Stress Management



Caregiving Strategies

If you are interested and would like to sign up, please contact Janis at 208-595-1896



Presented by CR Tech Support

TECHNOLOGY CLINIC

# BEST EVER TRICKS & TIPS

Cheri Reinke will hold a Technology Clinic on January 8th, 2025 from 1:00-1:45pm at The Senior Connection. This month she will talk about Tricks and Tips on your cell phone and computer.

ONE-ON-ONE APPOINTMENTS CAN BE BOOKED BY CALLING THE SENIOR CONNECTION FOR AFTER THE CLASS



[www.critechsupport.com](http://www.critechsupport.com)



# WATERCOLOR CLASS WITH ANNIE

WEDNESDAY, JANUARY 8TH  
AT 1:15 PM



Space is limited, please make your reservations with Molly at 208-788-3468

If you have already participated you will be added to the waitlist

## DINER'S CLUB

SATURDAY, JANUARY 18TH

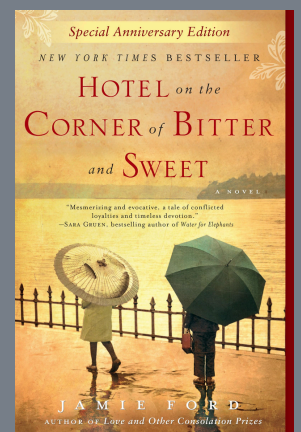


Meet at the Senior Connection  
12:00 pm to Carpool  
or meet us at the restaurant at  
12:30 PM

8

## JOIN OUR BOOK CLUB

Thursday, January 16th  
10:00 am at the Senior Connection.



A welcoming book club where we  
share their love of reading, discuss  
literature, and foster a sense of  
community.

Please reach out to Molly for  
reservations. RSVP to secure your  
spot! 208-788-3468



# VISION & HEARING CENTER UPDATES

STARTING JANUARY 1ST, 2025

**The Vision and Hearing Center is moving to Hailey!**

New Location – Starting January 2025

We're Moving to Hailey!

Starting January 2025, The Senior Connection Vision and Hearing Center will be located at:

314 South River Street, Suite 206  
(Above Copy & Print in Hailey)



Dr. Nathan Welch,  
MD



Dr. Jennifer Olburn,  
D.O. FAOCO



Janileth Ruiz,  
Technician

If you have an appointment scheduled in January, please call 208-928-4300 to confirm your appointment and the new location.



## Vision Services

**FREE SCREENINGS by appointment for:**  
Retinal diseases, diabetic eye disease, glaucoma

**Treatment on site for retinal disease.**

Referral arrangements for other vision conditions identified at screening review.

## Hearing Services



**FREE SCREENINGS by appointment to:**



Determine if someone has hearing loss, and identify hearing range

For those with a hearing screening outside the normal range, a referral for a thorough hearing evaluation with a hearing specialist will be initiated.

# JANUARY ACTIVITIES

## Additional Activities

Carey Center - Fit & Fall Proof - Tuesday and Thursday, 10:00 - 11:00

Sunday	Monday	Tuesday	Wednesday	Thursday	Friday	Saturday
			1 <i>Happy New Year</i> 	2 CASEY'S CIRCUIT 11:15-11:45	3 FIT & FALL 11:15 AM <b>Bridge With Jan p.13</b>	4
5	6 AGELESS MOTION 11:15 AM	7 CASEY'S CIRCUIT 11:10-11:40 <b>BINGO</b> Trivia Tuesday	8 <b>Bridge p.13</b> Tech Class p.7 FIT & FALL 11:15 AM Watercolor p.8 <small>ALZHEIMER'S/DEMENTIA CAREGIVER SUPPORT GROUP P.17</small>	9 CASEY'S CIRCUIT 11:10-11:40	10 FIT & FALL 11:15 AM <b>Bridge With Jan p.13</b>	11
12	13 AGELESS MOTION 11:15 AM <b>Dance p.13</b>	14 CASEY'S CIRCUIT 11:10-11:40 Trivia Tuesday	15 <b>Bridge p.13</b> FIT & FALL 11:15 AM <small>ALZHEIMER'S/DEMENTIA CAREGIVER SUPPORT GROUP P.17</small>	16 CASEY'S CIRCUIT 11:10-11:40	17 Jam Session p.13 FIT & FALL 11:15 AM <b>Bridge With Jan p.13</b>	18 <b>Diner's Club p.8</b> 
19	20 AGELESS MOTION 11:15 AM	21 CASEY'S CIRCUIT 11:10-11:40 <b>BINGO</b> Trivia Tuesday	22 <b>Bridge p.13</b> FIT & FALL 11:15 AM Table Massage p.12 <small>ALZHEIMER'S/DEMENTIA CAREGIVER SUPPORT GROUP P.17</small>	23 CASEY'S CIRCUIT 11:10-11:40	24 FIT & FALL 11:15 AM <b>Bridge With Jan p.13</b>	25
26	27 AGELESS MOTION 11:15 AM	28 CASEY'S CIRCUIT 11:10-11:40	29 <b>Bridge p.13</b> FIT & FALL 11:15 AM Table Massage p.12 <small>ALZHEIMER'S/DEMENTIA CAREGIVER SUPPORT GROUP P.17</small>	30 CASEY'S CIRCUIT 11:10-11:40	31 FIT & FALL 11:15 AM <b>Bridge With Jan p.13</b>	



### Fit & Fall Proof Fit™ (FFP)

Helps improve mobility for every day living activities.

### Casey's Circuit Training

A cycle of 5-7 exercise stations that alternate different muscle groups and body parts used. Each exercise lasts 30-60 seconds and rest between each station is minimal. The cycle is repeated for 20-30 minutes.

### Ageless Motion

A class that cultivates body-mind health through awareness, mindfulness, slow movements, breathing exercises, self massage, meditation, body-mind rejuvenation, and happiness skills.

# JANUARY MENU

Sunday	Monday	Tuesday	Wednesday	Thursday	Friday	Saturday
			1 <i>Happy New Year</i> CLOSED	2 Carey Congregate <b>Honey Ham</b> NO MEALS ON WHEELS	3 <b>French Toast</b>	4
5	6 <b>Potato Bar With Beef Chili</b>	7 <b>Sweet and Sour Chicken</b>	8 <b>Lasagna</b>	9 <b>Pot Roast</b> NO MEALS ON WHEELS	10 <b>Fish and Chips</b>	11
12	13 <b>Chicken Parmesan</b>	14 <b>Cheese Steak Sandwich</b>	15 <b>Chicken Caprese</b>	16 <b>Baked Trout</b> NO MEALS ON WHEELS	17 <b>Strawberry Waffles</b>	18
19	20 <b>Smoked Brisket</b>	21 <b>Enchiladas</b>	<b>Fried Chicken</b>	23 <b>Meatloaf</b> NO MEALS ON WHEELS	24 <b>Chicken Fried Steak</b>	25
26	27 <b>Chicken Tacos</b>	28 <b>French Dip</b>	29 <b>Ginger Beef Broccoli</b>	30 <b>Sub Sandwiches</b> NO MEALS ON WHEELS	31 <b>Biscuits and Gravy</b>	

**\*Menu is subject to change depending on product availability.  
Please arrive between 11:30 AM- 1 PM for dine-in service.**

## Lunches

\$6 for adults 60 and better (A suggested donation)

\$10 for those under 60 years of age

\$10 for meals To-Go

\$4 for children 12 and under



# DANCE CLASS

at the Senior Connection

Classes taught by Molly!

Things are getting rowdy on  
Monday, January 13th at 1:00 PM.

**Space is limited, please make your reservations  
with Molly at 208-788-3468**



# TABLE MASSAGE

Wednesday

January | 22nd | 29th

9:00am - 11:00am

Gene McLaughlin is renowned for his expertise in deep tissue massage and Shiatsu, offering comprehensive and personalized care for his clients.



FULLY CLOTHED IN AN OPEN ROOM  
WITH AN OPEN DOOR

Appointments and Pre-Payment Are  
Required On A Pay What You Can Basis



**JOIN US IN  
PLAYING BRIDGE!**

**the Senior Connection  
Every Wednesday and  
Friday at 1:15 pm**

Space is limited, please make your  
reservations with Molly  
at 208-788-3468



# JAM SESSION



AT THE SENIOR CONNECTION

**JANUARY. 17TH**

Join us for a fun and lively Jam Session on Friday, January 17th right after lunch! Whether you play an instrument, sing, or just love music, this is your chance to make some joyful noise with fellow music lovers. All skill levels are welcome, so bring your instrument (or just your voice) and let's make some music together

Space is limited, please make your reservations with  
Molly at 208-788-3468

# — AGING OUT WEST —

CONFIDENTLY NAVIGATE AGING

Care Management | Aging Advocacy

(208) 720-0194

agingoutwest.com



# SIMPSON LAWN CARE, LLC



**CALL SAM (208) 420-3023**

**Call me today - I'll be there!**

# ASK PHIL

**PHIL DOERFLEIN 208.721.2539**



## Windermere

REAL ESTATE SUN VALLEY

## HALLMARK

IDAHO PROPERTIES

### 208-928-SOLD



**REAL ESTATE \* CONSTRUCTION \* PROPERTY MANAGEMENT**



# Happy NEW YEAR

## Wishing you A year of expectations for great and beautiful happenings.

If you did not get a chance to review your plan during Annual Enrollment and You are on a Medicare Advantage plan- You can still review your policy. Call me for a free evaluation today.



Michelle Sandoz

Your Local Medicare Insurance Plans Advisor

519 South Main St.  
Hailey, ID

208-788-9209

Call me to schedule an appointment and discuss your options.

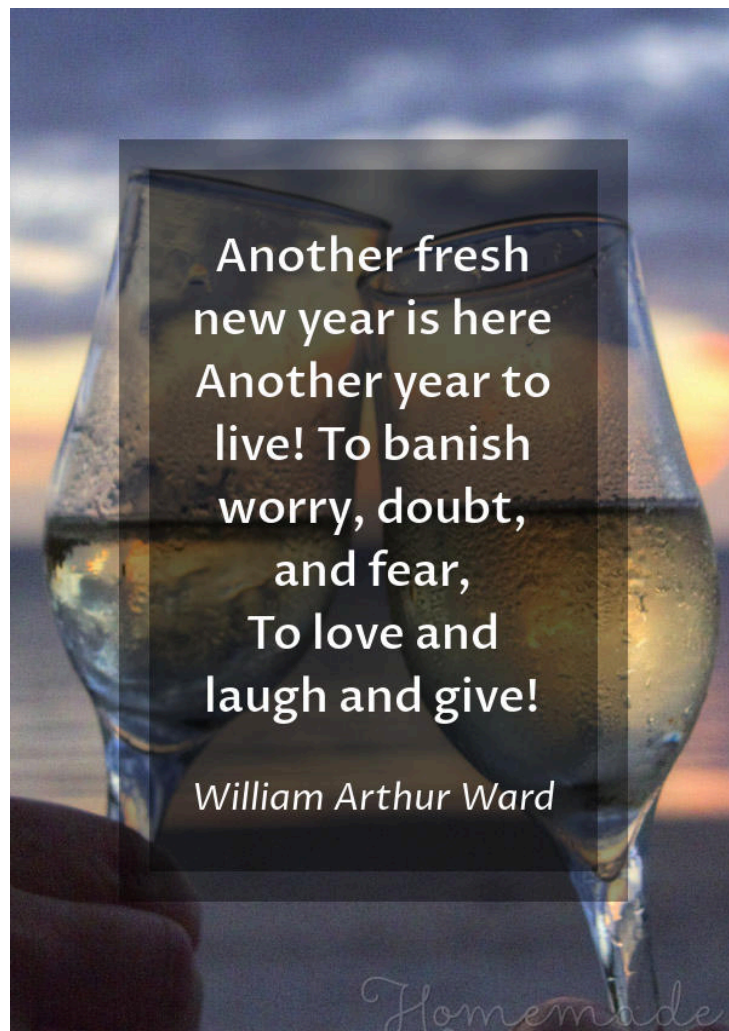


# LEGACY SOCIETY

Create your legacy today, and support Blaine County seniors for years to come.

Joining the Legacy Society is as simple as naming the Senior Connection as a beneficiary in your estate plans. We suggest you consult a financial advisor or estate attorney for help in choosing an option for you, or reach out to us to find out how to get the process started.

To pay it forward with a planned gift, give us a call at 208-788-3468 and ask for a member of the Development Team.



## Estate Planning Corner: Start the Year Prepared

*The new year is a great time to review your estate plans.  
Here are a few tips to get started:*

- **Update Your Documents:** Ensure your will, trust, and power of attorney reflect any recent life changes.
- **Organize Your Records:** Keep financial and legal documents in a secure, accessible place.
- **Communicate Your Wishes:** Share your plans with trusted loved ones to avoid future confusion.



Taking these simple steps now can provide peace of mind for you and your family in the year ahead.



This holiday season, we hope you will *share the love* by supporting our aging neighbors nationwide.

MILLIONS OF SENIORS ARE LEFT BEHIND, ALONE AND HUNGRY,  
AND THE PROBLEM IS ONLY GROWING.



**1 IN 2 SENIORS  
LIVING ALONE**  
lack the income to pay  
for basic needs<sup>1</sup>

**THE SENIOR  
POPULATION IS SET  
TO REACH 91M**  
in the next decade, with  
**112M EXPECTED**  
by 2060<sup>1</sup>



**ABOUT  
13 MILLION SENIORS**  
are threatened by or  
experience hunger<sup>2</sup>

MEALS ON WHEELS DELIVERS NUTRITIOUS MEALS AND  
COMPANIONSHIP; WE HELP SENIORS AGE IN THEIR HOMES.



*"I have the sweetest people that bring my meals. They are precious. I call them my angels. They are always polite and talk to me sometimes, which is good when stuck in a place. It's a breath of fresh air when they come in."*

• MARY LOU, MEALS ON WHEELS CLIENT

Over the last 16 years, Subaru and its retailers have helped the Meals on Wheels network provide **MORE THAN 4.6 MILLION MEALS** to seniors in need across the country.

**GET A GREAT VEHICLE AND SUPPORT A GREAT CAUSE.**  
**WITH EVERY NEW SUBARU PURCHASED OR LEASED, SUBARU AND ITS RETAILERS  
ARE DONATING A MINIMUM OF \$300 TO CHARITY, LIKE MEALS ON WHEELS.**  
**NOVEMBER 21, 2024 THROUGH JANUARY 2, 2025.**

LEARN MORE AT [WWW.MEALSONWHEELSAMERICA.ORG/SHARETHELOVE](http://WWW.MEALSONWHEELSAMERICA.ORG/SHARETHELOVE).

Information data sources available at [www.MealsonWheelsAmerica.org/Facts](http://www.MealsonWheelsAmerica.org/Facts);  
<sup>1</sup>The Escalating Issue of Senior Hunger, pg. 1; <sup>2</sup>The Escalating Issue of Senior Hunger, pg. 2

# Senior Connection Programs + Services

## NUTRITION

### Congregate Lunches

Monday—Friday

11:30 am—1:00 pm

\*Carey Congregate first Thursday of every month  
Check calendar for menu

To Go Meals: \$10 charge per pick up meal. If you would like a meal to-go, you can pick up a meal between 11:30 to 1:00.

Meals on Wheels

Home delivered meals, Call Molly @ 208-595-4220

## FITNESS

Fitness Membership - Includes all fitness classes, unlimited access to the fitness center (except during class time) - \$80 per year

### Fit & Fall Proof Class

Wednesday & Friday @ 11:15 am

\*Carey Center - Fit & Fall Proof - Tuesday and Thursday, 10:00 - 11:00

### Casey's Circuit

Tuesday/Thursday @ 11:15 am

### Ageless Motion w/Manon

Monday @ 11:15 am

## WELLNESS

Senior Connection  
Vision and Hearing Center  
208-928-4301

FREE VISION AND HEARING SCREENINGS

Call to make an appointment request, or go online

[www.seniorconnectionidaho.org/vision-hearing-center/](http://www.seniorconnectionidaho.org/vision-hearing-center/)

## CAREGIVING

Homemaker Services - Help with light housekeeping, errands, cooking and more

Personal Care Services - Help with bathing, dressing, companionship and more

Respite Services - Help with companionship and supervision for caregiver respite  
Call Janis at 208-595-1896 for more info

## TRANSPORTATION

Senior Connection Bus - Daily Rides to the Senior Connection Monday-Friday

\*\*\*Reservations Required - 48 Hours In Advance\*\*\*

Hailey/Bellevue - \$30 per month or \$5 per day

Mid-Valley - \$45 per month or \$10 per day

Ketchum, Sun Valley, Carey and Picabo -

\$55 per month or \$15 per day

## Mountain Rides Public Transportation

Hailey Route deviates to the Senior Connection with 2 hour advanced notice.

Call 208-788-7433 for pickup.  
All routes are currently free.

Mountain Rides also offers paratransit/ADA service. For Non-Emergency Medical Transport, NEMT, request Kim to schedule @ 208-788-7433



# Volunteer Spotlight

I joined my husband in retirement recently. Most of my career was working in the medical world. I lived out these best days fishing with my husband and lazy paddle board trips on the Silver Creek, and game hunts in the fall. My biggest enjoyment, though, is my family. I am a caretaker of my disabled 37 year old daughter who has brought much joy to our family. I admire watching my daughters raise families of their own. But those grandchildren...hanging with my grandchildren is the best!

I am a native of Idaho and have lived outside the state over the years. But always comes back home. I have known from a very early age that caring for people was my gift. I really feel that the Senior Connection is unique and I wanted to be a part of it. I am able to use my gift by volunteering for Meals On Wheels. I wish that more counties in Idaho were as lucky to have facilities such as this.



## VOLUNTEER OPPORTUNITIES

Are you ready to give back and make a positive impact in our community?  
Look no further!

**Meals on Wheels Volunteers:** Help deliver nutritious meals to homebound seniors. Your friendly smile and a warm meal can brighten their day and provide essential support.

**Lunch Room Servers:** Join us in our lively lunchroom, serving meals and sharing conversations with our seniors. Your kindness and energy will create a fun and engaging environment.

Email us at [info@seniorconnectionidaho.org](mailto:info@seniorconnectionidaho.org) or call us at 208-788-3468

# FITNESS MEMBERSHIP



## WHY JOIN OUR ANNUAL MEMBERSHIP?

Our program is designed to promote physical, mental, and emotional well-being by offering a range of fitness classes suitable for all fitness levels. We are here to encourage new friendships, shared experiences and all while working out in a safe and welcoming environment.

### BENEFITS YOU CAN GAIN WITH US:

- Exercises that help promote mobility
- Circuit training with professional Trainers
- Modern equipment & weights
- Unlimited Access Mon-Fri from 9am-4pm \*

### ANNUAL 12-MONTH MEMBERSHIP

**\$80** / PERSON

GET MOTIVATED, AND STAY ENERGIZED! SIGN UP FOR YOUR SENIOR CONNECTION GYM MEMBERSHIP TODAY



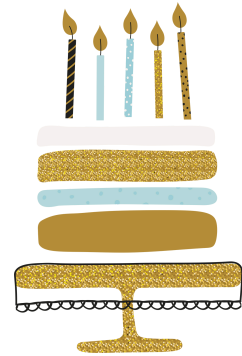
208-788-3468  
[SENIORCONNECTIONIDAHO.ORG](http://SENIORCONNECTIONIDAHO.ORG)  
 721 SOUTH 3RD AVE HAILEY, ID

\*No access during fitness classes scheduled M-F 11:15AM - 12:00 PM

# Happy Birthday! January 2025



- |                         |                          |                            |
|-------------------------|--------------------------|----------------------------|
| 1 Robert Pyrah          | 10 Mary Jo Rumball-Petre | 22 Sandi Frederick         |
| 1 Ali Lane              | 11 Les Dilley            | 22 Richard Miller          |
| 1 Suzie Pearson         | 11 Marty Avery           | 25 Nathaniel Beitler       |
| 1 Casey Scherer         | 12 Sandi Alford          | 26 Emma Burton             |
| 1 Richard Carrothers    | 12 William Smith         | 26 Linda Pattinson         |
| 1 Norman Huber          | 13 Colleen Dugger        | 27 Michael Hobbs           |
| 1 Richard Hill          | 13 Don Nocito            | 27 Mary Kim Uranga-Iaragan |
| 2 Tom Lovell            | 14 David Moe             | 29 William Pryor           |
| 2 Drew Ann Hastings     | 15 Dedman Ella           | 29 Tony Sanford            |
| 2 Rosemary Mcilhaney    | 16 Mardi Shepard         | 30 Doug Brown              |
| 2 Linda Rotondella-Elie | 16 Raquel Velazquez      | 30 Helen Cornett           |
| 3 Judy Gordon           | 16 John Kwan             | 30 Christopher James Orr   |
| 6 Grant Swindle         | 17 Randi Wilson          | 31 Carlyle De Bivort       |
| 6 Eliseo Gonzalez       | 19 Faye Barker           | 31 Mary Ann Ringelstetter  |
| 7 Mary Peterson         | 19 Julio Mitma           |                            |
| 7 Vicky Lockwood        | 19 John Brown            |                            |
| 7 Brian Dahl            | 19 Delores Mundie        |                            |
| 7 Armando Lopez         | 20 Betty Brooks          |                            |
| 8 Nancy Jones           | 20 Chris Selvage         |                            |
| 8 Bonnie Lazzarini      | 21 Janis Corkery         |                            |
| 8 Susan Dechevrieux     | 21 Gerald O'toole        |                            |
| 9 David Barovetto       | 21 Verla Goitiandia      |                            |
| 9 Mariyah Cueva         | 22 Tom Furtaw            |                            |



We do our best to acknowledge our Senior Connection family birthdays. Please email us at [info@seniorconnectionidaho.org](mailto:info@seniorconnectionidaho.org) with any errors or omissions so we can correct our records.



2024  
MEMORIES



---

## BOARD OF DIRECTORS

Don Cunningham  
Board Chair

Dr. Joseph Fastow  
Vice Chair

Mardi Shepard  
Secretary

Rick Allington  
Director

Mary Colhoun  
Director

Bob Kaplan  
Director

Trish Wilson  
Director

Diane Cordes  
Director