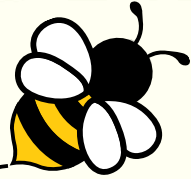


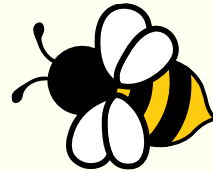
the **SENIOR CONNECTION**



**June**



**Newsletter**

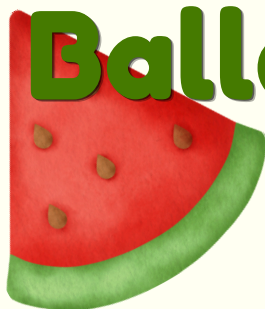


**Let's Get Out: Galena**



**Farmers Market**

**Ballet Sun Valley**



# OFFICE STAFF DIRECTORY

**Jovita Piña**  
**Executive Director**  
 jovita@seniorconnectionidaho.org  
 208-595-1868



**Jeny Ambriz**  
**Membership & Info. Coordinator**  
 jeny@seniorconnectionidaho.org  
 208-788-3468



**Sky Barker**  
**Nutrition Director & Chef**  
 sky@seniorconnectionidaho.org



**Orlanda Cabrito**  
**Caregiving Coordinator**  
 orlanda@seniorconnectionidaho.org



**Veronica Cisneros**  
**Transportation Coordinator**  
 veronica@seniorconnectionidaho.org  
 208-595-1885



**Cynthia Gallegos**  
**Office Manager**  
 cynthia@seniorconnectionidaho.org  
 208-595-1836



**Janis Gillette**  
**Caregiving Manager**  
 janis@seniorconnectionidaho.org  
 208-595-1896



**Sydney McGlaflin**  
**Fundraising & Communications Manager**  
 sydney@seniorconnectionidaho.org  
 208-595-1903



**Cyndi Ochoa**  
**Director of Operations**  
 cyndi@seniorconnectionidaho.org  
 208-595-1803



Letter From Jovita	3
Thank you Donors	4
Connect for a Cause	5
Highlights	6
June Menu	7
June Activities	8
June Activities List	9
Connection Club	10
Bingo & More	11
June “Ads” & Info	12-14
Birthdays	15



HELLO  
 SUMMER

# Letter from Jovita

Dear Friends of the Senior Connection,

Summer is just around the corner, and with it comes a season full of activity, adventure, and opportunities to connect. This time of year brings a special energy to our community, and we are looking forward to sharing an exciting summer with all of you at the Senior Connection.

Before looking ahead to summer, I want to extend my heartfelt gratitude to everyone who attended, supported, donated to, or volunteered for our annual fundraiser, Connect for a Cause. The evening was truly special and made possible by the incredible generosity and kindness of this community. Seeing so many people come together in support of the Senior Connection and the older adults we serve was deeply meaningful. Your support allows us to continue providing programs, meals, activities, caregiving support, and connection for seniors throughout the valley. Thank you for being such an important part of our mission.

As we move into the summer months, we have so much to look forward to. Our Let's Get Out outings are underway, including trips to the ballet, the symphony, Stanley, and several other excursions designed to bring people together while enjoying all the beauty Idaho has to offer. Whether it's a scenic drive, lunch with friends, or simply spending time outdoors, these outings are always filled with laughter, conversation, and meaningful connection.

We are also excited to welcome the Sun Valley Music Festival's concert truck to the Senior Connection on June 24th. The concert truck brings live music directly into the community, and this special outdoor performance on our front lawn will be a wonderful opportunity for participants and community members to gather and enjoy an afternoon together.

Summer is also an important time to remember to take care of ourselves. As the temperatures rise, I encourage everyone to stay hydrated, keep moving, and take time to enjoy the longer days in ways that feel healthy and enjoyable for you. The Senior Connection remains a wonderful place to gather during the summer months, whether you want to enjoy a nutritious meal, participate in an exercise class, cool off in our air-conditioned building, or simply spend time with others in the community.

Thank you for continuing to be part of the Senior Connection family. I hope this summer brings you many moments of joy, good health, and connection, and I look forward to seeing many familiar faces in the months ahead.

With gratitude,



Jovita Piña  
Executive Director



# We are so grateful to these donors who gave to the Senior Connection between April 22 and May 18:

Anonymous (7)  
Kelly and Wayne Allen  
Rick Allington and Elizabeth Wallace  
Americas Foundation  
Lesley Andrus  
Leila and Ted Angle  
Sherry Archer  
Alexandra Babalis  
Jim Baird  
Kathleen Bean  
Elli and Jerry Bernacchi  
Carol Bezdeka  
Patrick M. Buchanan  
Anne Bulchis  
Terri and Dale Bullock  
Teresa Campbell  
Lynn Champion-Waddell and Theodore Waddell  
Dawn Cieslik  
Carol Cole and Jim Rineholt  
Barbara and Dennis Coleman  
Diane and Jeff Cordes  
Croy Canyon Fund to Benefit Blaine County  
Seniors at the Idaho Community Foundation  
Beverly De Moura  
John and Deb Dimant  
Maria Dudunakis and Jerry Boesel  
Darlene and Ted Dyer  
Ellie and Michel Rudigoz  
Ann Ellis  
*-In Memory of Leon Ellis*  
James Feldbaum  
Claudia Fiaschetti  
Renoir and Joe Finizio  
Marybeth Flower  
Joyce Fogg  
Bob and Marcia Fosberg  
Constance Foster  
Carolynn Fuller  
Robert and Kathryn Gardner  
Debbie Garratt  
Nancy Goodenough  
Marcee Graff  
Claudia Graham  
Betty Grant  
Nancy Gurney  
Hallmark Idaho Properties, Debra Hall  
Charlotta and Scott Harris  
Linda Hayes  
Patti and Richard Haynes  
Tyler and Amery Hendricks  
Patricia and Alex Higgins  
Jeff and Virginia Holloway  
Larry and Mimi Huck  
Wendy and James Jaquet  
Anne Jeffery  
Martha Lewis Jennings

Craig and Laura Johnson  
Chris Keirn  
George and Barbara Knowles  
Rae Kozlowski  
Cynthia Lambert  
Alice Lane  
Marcia Lee Kent  
Jeanne and Tom Liston  
Valerie Logsdon and Al Pokorny  
Annie Mabry  
Akiko Maeda  
Mary and Steve Malkmus  
Mike and Anita McCann  
Angenie McCleary  
Jamie McClure and Mike Price  
Mindy Meads  
Sheila and Jerry Mells  
Gayle Meredith  
Joe Miczulski and Angie Rayborn  
*-In Honor of our parents*  
Jeffrey and Nancy Mihalic  
Laurie and James Moss  
Barry and Barbara Neiwert  
Thomas Neustaetter  
Paris Nicholson  
Sally and Marc Onetto  
Alex and Sue Orb  
John and Abby Packer  
Maureen McGonigal Patterson  
Gerri Pesch  
Shelley Pierce  
April Piña  
Jovita Piña and Elmer Perez  
Scott Porter  
Kathryn Powell  
Peter and Molly Prekeges  
Sharon and Nick Purdy  
Roger Raymond  
Henry Reiter  
Kathryn Keefer Reynolds  
Ronile and Leroy Robinson  
Barbara and David Rognlien  
Beth and Bob Rohe  
Deb and Rob Santa  
Adele and Pat Savaria  
Sawtooth Ranger, Inc  
Janet Schaumburg  
Heidi Schiers  
Donna Scifres  
Sandy Scott  
Shelley Seibel and Alex Margolin  
Mardi Shepard  
Mary Simms and Frederick  
Benford  
Ivy Slike  
Melinda Springs  
Nina Steffens

Evan Stelma and Bart Lassman  
Thomas Stevens  
Deborah Straiton and Erik Larson  
Spooky and James Taft  
Nancie Tatum and Thomas Hennig  
The Life Church  
Jalen Valdez  
Tryntje Van Slyke  
Phyllis and Michael Viola  
Judy Ann Wampler  
Gay Weake  
Penny Weiss  
Pam and John Wells  
William Carey Hay Foundation  
Gail Wilson-Norgren and Tim Norgren  
John and Gina Wolcott  
Wood River Women's Foundation  
Tricia and Jim Wood  
Janet Wygle and Barry Luboviski  
Laurie and Don Yeager  
Hugh and Margaret Youdall  
Larry Young



If you spot an error or omission, please let us know: (208) 595-1903

# THANK YOU!

Thank you to everyone who attended, donated, sponsored, volunteered, and helped make this year's Connect for a Cause such a success. We are incredibly grateful for the support and generosity of our community.



If you would still like to support our Annual Campaign, there is still time to give:

<https://seniorconnectionidaho.org/ways-to-give>



L  
i  
v  
e



M  
u  
s  
i  
c



**Leave the Center @ 6:00 p.m.  
Call Jeny to reserve a spot 208-788-3468**





# HIGHLIGHTS





# JUNE MENU



Sunday	Monday	Tuesday	Wednesday	Thursday	Friday	Saturday
	1 CHEESESTEAK SANDO	2 FRIED CHICKEN	3 PULLED PORK	4 CHICKEN ALFREDO	5 CHICKEN TERIYAKI	6
7	8 BRATWURST	9 CHICKEN CAPRESE	10 SHRIMP AND GRITS	11 BROWN SUGAR HAM	12 CHEESEBURGER	13
14	15 SWEET AND SOUR CHICKEN	16 PORK CARNITAS	17 FRENCH DIP	18 FISH AND CHIPS	19 CHICKEN PARMESAN	20
21 FATHER'S DAY 	22 BAKED POTATO	23 GYRO	24 NACHO BAR	25 TUSCAN TROUT	26 BISCUITS AND GRAVY	27
28	29 CHICKEN FRIED STEAK	30 BRISKET				



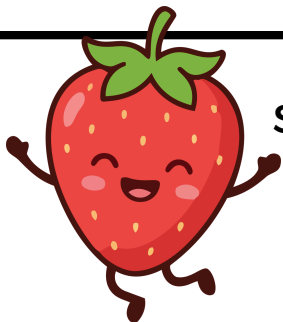
Celebrate Father's Day in a fun, creative way!  
Come decorate a trucker hat with us.

**Friday, June 19, at 1:15 p.m.**

Reserve your spot by calling Jeny at 208-788-3468



**The menu is subject to change depending on product availability.  
Please arrive between 11:30 a.m. and 1:00 p.m. for dine-in service.**



## Lunch

\$8 for adults 60 and older (A suggested donation)

\$12 for those under 60

\$12 for meals to-go

\$6 for children 12 and under



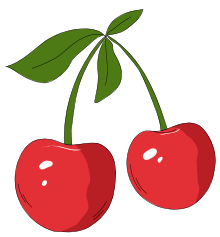


# JUNE ACTIVITIES



Sunday	Monday	Tuesday	Wednesday	Thursday	Friday	Saturday
	1 Ageless Motion	2 Casey's Circuit Functional Movement	3 Fit & Fall Proof Bridge	4 Casey's Circuit	5 Fit & Fall Proof Bridge Bingo	6
7	8 Ageless Motion	9 Casey's Circuit Functional Movement	10 Fit & Fall Proof Bridge Tech Class	11 Casey's Circuit Let's Get out!	12 Fit & Fall Proof Cancelled Bridge Jam Session	13
14	15 Ageless Motion	16 Casey's Circuit Functional Movement	17 Fit & Fall Proof Bridge Watercolor	18 Casey's Circuit	19 Juneteenth Fit & Fall Proof Bridge	20 Diner's Club
21 Father's Day	22 Ageless Motion	23 Casey's Circuit Functional Movement	24 Fit & Fall Proof Bridge Farmers Market	25 Casey's Circuit	26 Fit & Fall Proof Bridge	27 Ballet
28	29 Ageless Motion	30 Casey's Circuit Functional Movement Ketchum Alive				





# JUNE ACTIVITIES LIST



## Times – Activities Listed from A to Z:

- **Ageless Motion:** 11:15 a.m. every Monday
- **Bingo:** Friday, June 5, from 5:30–7:30 p.m.
- **Book Club: Sarah’s Key,** Thursday, June 11 at 10:00 a.m.
- **Bridge:** 1:00 p.m. every Wednesday and Friday
- **Casey’s Circuit:** 11:15 a.m. every Tuesday and Thursday
- **Diners Club: Fuego** Saturday, June 20 at 12:00 p.m.
- **Dementia Caregiver Support Group:** Call for more information.
- **Fit & Fall Proof:** 11:15 a.m. every Wednesday and Friday
- **Functional Movement Lessons:** 1:00 p.m. every Tuesday
- **Let’s Get Out:** June 11 at 9:15 a.m. Galena Lodge
- **Father’s Day Lunch:** Hat decorating afterwards!
- **Music Jam:** Friday, June 12 at 1:00 p.m.
- **Tech Class:** Wednesday, June 10, 10:30–11:30 a.m.
- **Watercolor:** Wednesday, June 17 from 1:00–3:00 p.m.
- **Farmers Market:** Wednesday, June 24 at 1:00 p.m.
- **Ballet at Sun Valley:** Saturday, June 27 at 6:15 p.m.
- **Ketchum Alive:** Tuesday, June 30 at 5:45 p.m. – Bring your own chair

**Carey Center** – Fit & Fall Proof: 10:00 a.m. every Tuesday and Thursday  
Lunch is served on the first Thursday of every month.

20482 Main Street Carey, Idaho 83320





# CONNECTION CLUB



The Connection Club is our memory care program. It is held on site at the Senior Connection and includes structured activities and crafts, lunch, music group, and fitness.

- ✓ Tuesday's and Thursdays  
11:00 AM - 3:00 PM
- ✓ Attendees are responsible for their own transportation
- ✓ \$85 per day
- ✓ Reservation required

**CONTACT US**

FOR MORE INFORMATION



**BINGO FIRST FRIDAY  
OF EVERY MONTH**

**Bingo!**



**TIME TO WIN**

**\$10 PER CARD, MUST BE 18 YEARS OR OLDER**

**5:30 - 7:30 P.M.  
FRIDAY, JUNE 4**

**Call (208) 788-3468 for more info**

**Diner's Club**



**SATURDAY, JUNE 20**

**MEET AT FUEGO AT NOON**

Rides and scholarships are available upon request.  
Please contact **Jeny** at **(208) 788-3468** to reserve a spot.

**Handy Man or  
Spring Clean-Up?**



**Are you in need of a handyman  
or spring clean-up? Please call  
us, and we can help you.**

**(208) 788-3468**

**Watercolor Class  
with Annie**

**Wednesday, June 17**

**1:00-3:00 p.m.**



**\$5 Suggested Donation**

**To reserve your spot, please call  
Jeny: (208) 788-3468**

# Let's Get Out to...

N  
a  
t  
u  
r  
e  
  
W  
a  
l  
k

L  
o  
d  
g  
e  
  
L  
u  
n  
c  
h



**Thursday, June 11**

**Meet @ the Center 9:15 a.m.**

**Call Jeny to reserve a spot (208) 788-3468**

**\$10 Suggested Donation**

## Meals on Wheels

We deliver nutritious lunches for seniors four days a week with the option to include an additional sack lunch intended for non-delivery days.



CALL OR EMAIL US FOR MORE INFORMATION

(208) 788-3468

PROGRAMS@SENIORCONNECTIONIDAHO.ORG

## THANK YOU, JANE!

WITH HEARTFELT GRATITUDE TO JANE DRUSSEL AND HAILEY THRIFT



Visit Hailey Thrift to shop or donate your gently used items.  
Located at 12 E Bullion St, Hailey, ID 83333  
Open Monday-Saturday from 10 am to 5 pm



Every purchase and donation supports the Senior Connection's Meals on Wheels program, providing nutritious meals, safety checks, and social connections.

Jane, your impact reaches far beyond the walls of your store. Thank you for turning compassion into action and making a lasting difference in our community!

# Acoustic Music Jam



**Friday, June 12**

**1:00-3:00 p.m.**

**At the Senior Connection**

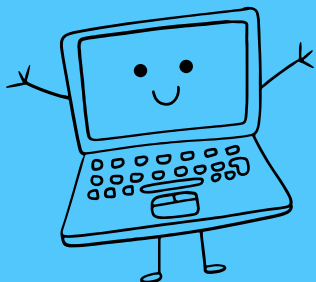
Everyone welcome to play,  
sing, or just listen!

## Technology Class

With Cheri Reinke

June 10, 10:30-11:30 a.m.

**Ordering Medications and  
Supplements Online**



Sun Valley Senior Support

(509) 595-9942

[www.sunvalleyseniorsupport.com](http://www.sunvalleyseniorsupport.com)

To reserve your spot, please call

Jeny: (208) 788-3468



**Wednesday, June 24**

**Leave the center at 1:00 p.m.**

Call Jeny to reserve a spot: (208) 788-3468

**Fruits - Veggies - Baked Goods  
Popcorn - Flowers - Music**

## BOOK CLUB

Thursday, June 11

10:00 a.m. at the Senior Connection



A welcoming book club where we  
share the love of reading and  
appreciate a sense of community.

To reserve your spot, please call

Jeny: (208) 788-3468



# BALLET

SUN VALLEY

**Join us Saturday, June 27, at the Sun Valley Pavilion for a night of magic with the Pacific Northwest Ballet**

We will leave the center at 6:15 p.m. The show is 7:00-8:30 p.m. Space is limited, please call to reserve your spot.  
\$10 Suggested Donation

To reserve your spot, please call Jeny: (208) 788-3468



**MEDICAL CLINIC SERVICES**

- Wellness Exams, Including Annual Vaccinations
- Comprehensive Diagnostic Exams
- Same Day Emergency Services (Weekdays)
- Puppy/ Kitten Visits
- Cat and Dog Spay/ Neuter

- Cat and Dog Dentals, Including Radiographs and Extractions
- Nail Trims and Anal Gland Expression
- Microchipping (free to all Blaine County Residents)
- Euthanasia and Cremation Services

**PUBLIC VETERINARY SERVICES:**

Mountain Humane offers comprehensive veterinary care including but not limited to spay/neuter, dentals, mass removal, urgent care and more.

Hours of operation are  
Monday through Thursday  
8:15 am to 5:00 pm.

Call 208-788-4351 ext. 302 or  
email [medical@mountainhumane.org](mailto:medical@mountainhumane.org)  
to schedule an appointment.

**NEIGHBORING COMMUNITY SERVICES:**

All services offered through Mountain Humane are available to residents of Fairfield, Shoshone, Twin Falls, Dietrich, Richfield, Gooding and Jerome.

If financial support or transport is needed,  
contact Pita Vega for scheduling at  
208-806-0748 or  
email [pvega@mountainhumane.org](mailto:pvega@mountainhumane.org).

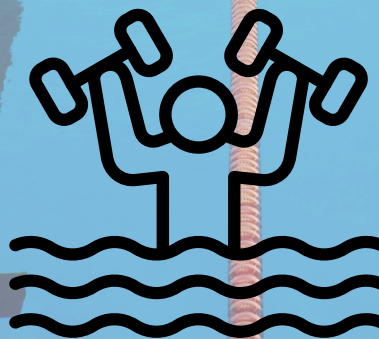
208-788-4351 ext.302  
[medical@mountainhumane.org](mailto:medical@mountainhumane.org)  
101 Croy Creek Rd  
PO Box 1496, Hailey, ID 83333



# Aqua Aerobics

**Every Tuesday at 9 a.m. at the BCRD.**

Suggested Donation \$5 per month



To reserve your spot, please  
call Jeny: (208) 788-3468

# HAPPY BIRTHDAY! JUNE 2026

## 1st

David Brown  
Angel Cahuana  
Mark Howland

## 2nd

Nina Steffens

## 3rd

Lesley Andrus  
Patricia Feldstein

## 4th

John Tapia

## 6th

Pamela Baker  
Ann Ellis  
Charles Wilson

## 7th

James Perkins

## 8th

Robert Hannon  
Vickie Kensington

## 9th

Cathy Lind

## 17th

Patrick Simpson

## 18th

Shelley Seibel  
Lewis Tripp

## 19th

Orlanda Cabrito  
Christopher Campbell  
Eugene Mclaughlin

## 21st

Jeanne Cassell  
Harold Ward  
Eileen West

## 23rd

Sherri Dominic

## 24th

Carol Henry

## 25th

Jerry Smith

## 26th

Martha Burke  
Heike Striebeck

## 27th

Mary Mcclanahan  
Jeffrey Steinberg

**If you spot an error or omission,  
please let us know.**



## NEW MEDICARE GLP-1 BRIDGE PROGRAM

Starting July 1, 2026, eligible Medicare beneficiaries may be able to access certain GLP-1 weight-loss medications for \$50 per month through the new Medicare GLP-1 Bridge program.

This program works outside of the regular Part D plan process, and prior authorization must be submitted by the prescribing provider through a central processor.

To qualify, beneficiaries must be enrolled in a Medicare Part D plan or a Medicare Advantage plan with drug coverage and meet CMS clinical requirements.

Covered medications may include Wegovy, Foundayo, and Zepbound KwikPen, depending on CMS rules.

**Beneficiaries should speak with their healthcare provider  
to determine whether they qualify.**

**Michelle Sandoz**  
Your Local Medicare  
Plans Advisor

**(208)788.9209**

**519 S. Main St  
Hailey**

# Summer Activities

## **JUNE:**

**Galena**

**Aqua Aerobics**

**Ketchum Farmers Market**

**Ballet**

**Ketch'em Alive**

## **AUGUST:**

**Aqua Aerobics**

**Symphony**

**Wicked Spud**

**Ketchum Farmers Market**

**Stanley Overnight Trip**

## **JULY:**

**Aqua Aerobics**

**Ice Cream Social**

**Smiley Creek**

**Music Truck**

**Ketchum Farmers Market**